



The Intelligent
Management Platform for
Multifamily Buildings.





THERMOSTATS

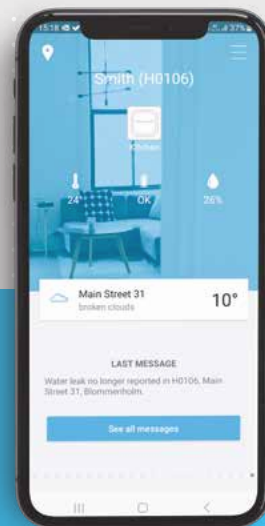


WATER SHUTOFF VALVE

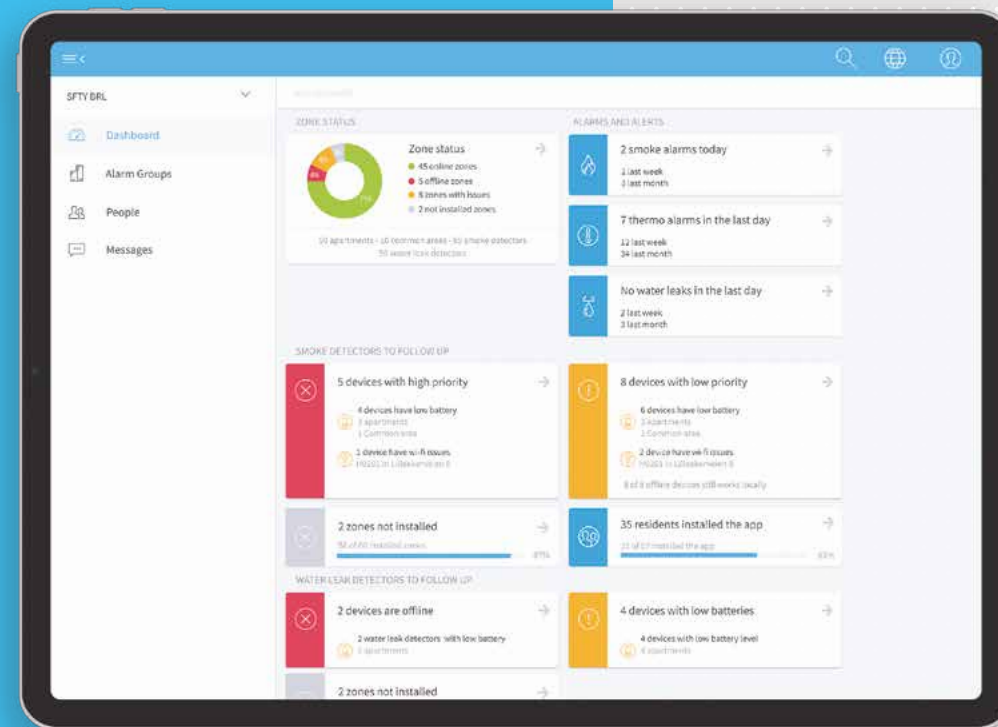


WATER LEAK DETECTOR

SFTY CONTROL
(MANAGEMENT DASHBOARD)



RESIDENT APP



Meet sfty. Platform overview.

sfty [safe-t] by Resideo offers a comprehensive and intelligent building management solution for multifamily properties.

sfty integrates water leak detection alongside, temperature control and humidity monitoring. Built with flexibility and efficiency in mind, the system's timely notifications are designed to stop minor incidents from escalating into costly emergencies by alerting property managers and residents when a potential issue is detected.



Timely notifications



Integrated, modular solution



Wireless system communication



24/7 reporting

*devices not to scale

Smart monitoring for proactive property management.

By delivering timely insights, weekly status reports, and helping reduce the need for frequent on-site inspections, sfty enhances both time management and cost efficiency, making it a valuable tool for proactive property management.



Resident Support

sfty Control enables messaging to residents and issues a weekly report to property managers with a summary of events and device status.

Instant Alert Features

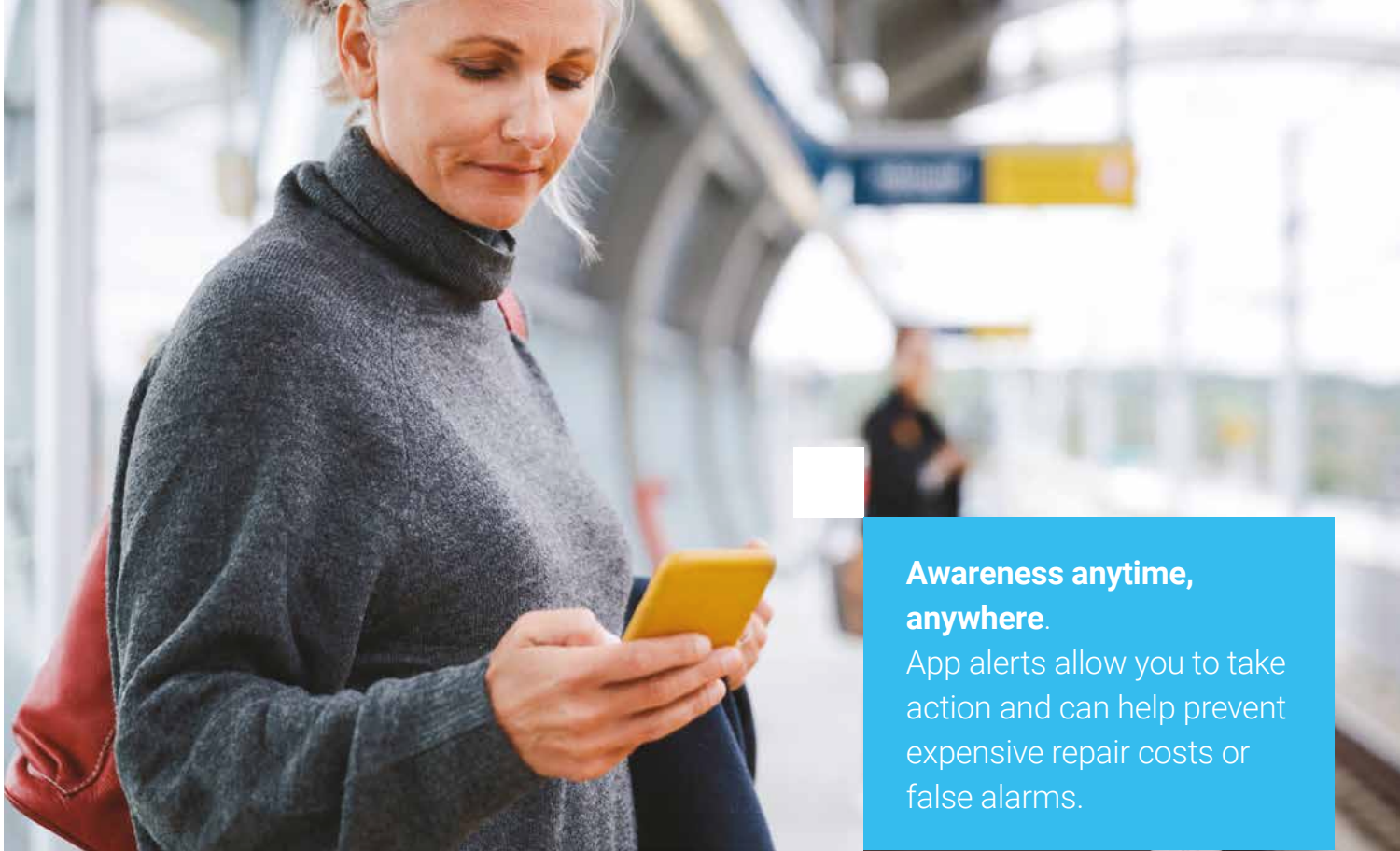
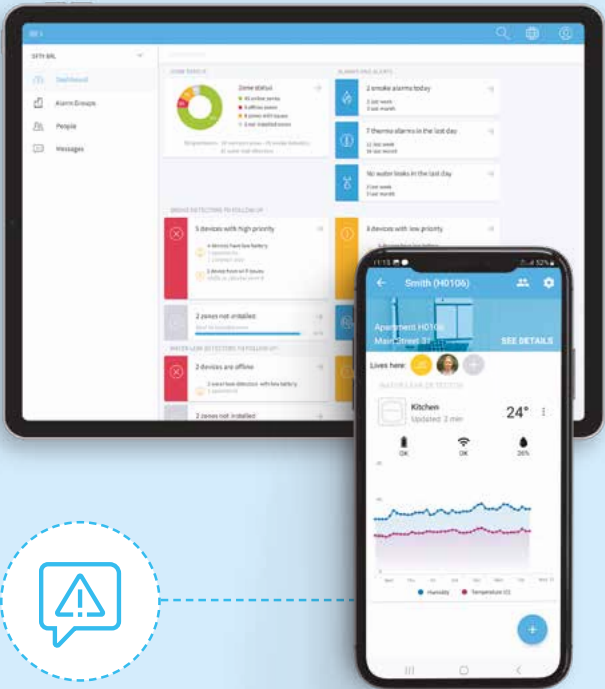
Direct sensor hardware malfunction notifications for the property manager's rapid response.

Timely Updates

Streamlined communication for residents and property managers, reducing site inspections and saving time.

Event Archive

Captures and documents all events to track patterns and optimise maintenance.



Awareness anytime, anywhere.

App alerts allow you to take action and can help prevent expensive repair costs or false alarms.

Stop minor issues becoming costly incidents.

sfty can provide, ambient temperature and water device awareness, helping property managers prevent minor issues from escalating into major problems.





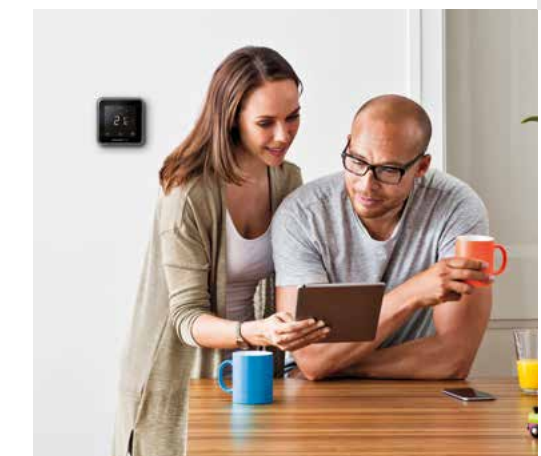
Specialist installation. Minimal disruption.

Get up and running fast. With our dedicated installers and the device wireless features, we streamline the installation process and help avoid major alterations to your building.



Our multi-detector hardware is sleek, discrete and has an unobtrusive design allowing it to blend seamlessly into any environment.

The sfty system is a scalable solution that evolves with your building's changing needs for, water leak detection or temperature control. Whether your property expands or occupation levels change, the system adapts effortlessly, allowing for the easy addition of new sensors without the need for a complete overhaul. Thanks to its flexible IoT framework, the sfty system provides you with an adaptable and smart way of managing your building's connected water leak detector coverage and temperature.



**Standout protection,
that doesn't stand out.**
sfty's hardware is designed
to blend effortlessly into
any environment.

How it works:
Hardware.



Connected Thermostats
Honeywell Home DT4, evohome, T6R

Honeywell Home DT4, evohome, and T6R thermostats work with sfty Control to enable remote temperature monitoring, improving energy efficiency and managing vacant units. These connected devices provide clear data insights, helping building managers understand heating usage and optimise comfort. With dashboard reports including boiler diagnostics and run-time data, users can reduce service calls and boost performance. sfty Control's intuitive dashboard and meaningful analytics showcase the power of smart building management.



Water Leak Detector
Resideo L1

The Resideo L1 Water Leak Detector can detect water leaks and potential freeze risks. It can be placed near water-prone areas like under sinks or near appliances.



Water Shut-Off Valve
Resideo L5

In addition to providing alerts, our water leak solution can be integrated with the L5 Water Shut-Off Valve so that the water supply can be stopped at the source to prevent further water damage quickly and effectively.

How it works:

sfty software and app.

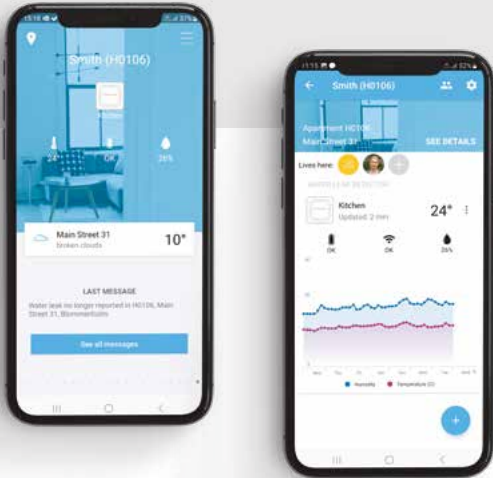


Management Dashboard

The sfty Control Management Portal serves as the central information hub for property managers, providing a streamlined, user-friendly interface for monitoring device status across both common areas and individual apartments. It supports key functions including, water leak detection, humidity monitoring, and remote temperature control, ensuring that critical data from connected devices is accessible in one place.

In addition to monitoring, sfty Control enables direct messaging to residents and issues a weekly report to property managers. This report includes a summary of events, device status updates, and an archive of alarm reports. The portal helps simplify building oversight, supports prompt responses to potential hazards, and contributes to proactive maintenance planning.

- ✓ Continuous Monitoring
- ✓ Instant Messaging System
- ✓ Event Archive



Resident App

The sfty resident app offers alerts when connected sensors detect water leaks. The app features also include personal safety tools like the “Help Me” personal alarm and “Follow Me” feature to share live location.

Residents can manage connected sfty device settings, report issues, and add trusted contacts —all accessible anytime, anywhere.

- ✓ Timely Alerts
- ✓ Location Sharing
- ✓ Add Trusted Contacts

Technical specifications



Specification	Resideo L1	Resideo L5	Honeywell Home T6 (wired)
Type	Water leak detector	Water shut-off valve	Thermostat
Display	LED indicator	LED indicator	LCD touch screen
Connectivity / Communication	WiFi (2.4 GHz)	WiFi (2.4 GHz)	WiFi (2.4 GHz)
Smart Home Integration	Amazon Alexa, Google Assistant	Amazon Alexa, Google Assistant	Smart Home and Apple Home Kit ready
Power Source	Battery-powered (2 AA batteries)	230V power supply	230V power supply
Sensor	Detection on product and on cable sensor	Detection through cable sensor or via L1	F42010972 00110K (@ 25 °C) NTC thermistor only for T6 (wired)
Operating Relative Humidity	5-95% non-condensing	5-95% non-condensing	10-90% rh, non-condensing
Shut-off Valve Compatibility	Yes	Yes	N/A
Sensor Cable Length	5ft (expandable up to 500ft)	5ft (expandable to 500ft)	N/A
Audible Alarm	100 dBA	N/A	N/A
Alerts & Notifications	Via app, email, and push notifications	Via app, email, and push notifications	Via app, email, and push notifications
Dimensions	Height: 1.9 in Width: 3.1 in Depth: 1.1 in	Height: 3.7 in Width: 2.5 in Depth: 4.4 in	Height: 4 in Width: 4 in Depth: 1.1 in
Warranty	2 years	5 years	5 years
Awards, Certifications	<p>2023 iF Design Award Awarded by: iF International Forum Design GmbH. Recognition for: Outstanding product design and innovation in consumer electronics.</p> <p>PCMag Editors' Choice Award Awarded by: PCMag Recognition for: Affordability, ease of use, and effectiveness in detecting leaks and environmental changes.</p> <p>2024 Green Builder Sustainable Product of the Year Awarded by: Green Builder Media Recognition for: Environmental impact, innovation, and contribution to sustainable living.</p>		<p>CE, EMC:2014/30/EU, LVD: 2014/35/EU, R and TTE: 1999/05/EC, WEEE: 2012/19/EU, Wireless LAN: IEEE 802.11b,g,n, RF communication: ISM 868.0-870.0 MHz Receiver Category 2</p>



For more information
sfty.com

ADEMC01

3 Arlington Business Park,
Waterside Dr, Theale,
Reading, RG7 4SW, UK

Sfty AS,
Lilleakerveien 31,
0283 Oslo,
Norway.

Org/VAT no: NO 999 080 1

SFTY-EMEA-MKG-BRO-0003-A5 | 09/25

© 2025 sfty. The Honeywell Home trademark is used under license from Honeywell International Inc.

This product is manufactured by Resideo Technologies, Inc. and its affiliates.