



The Intelligent Safety  
Management Platform  
for Multifamily Buildings.





SFTY SENSE  
(Smoke Detector)

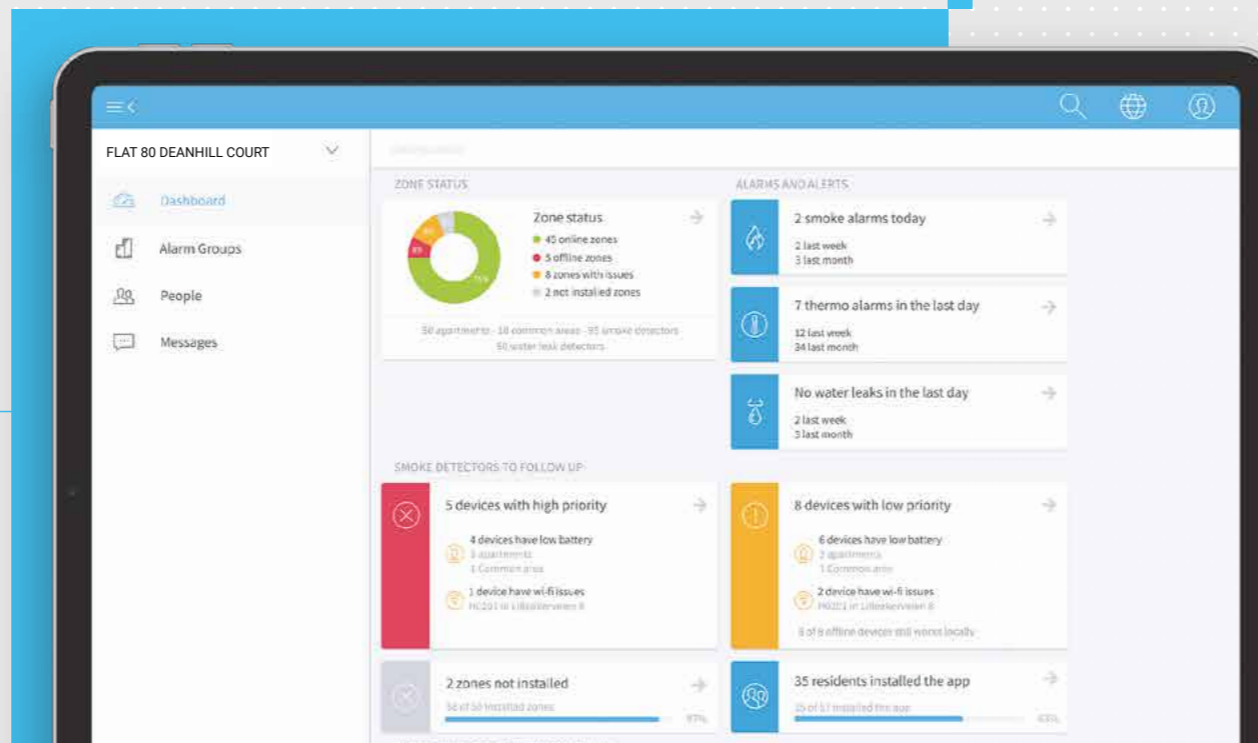


WATER SHUTOFF VALVE



WATER LEAK DETECTOR

ONLINE PORTAL MANAGEMENT DASHBOARD



## Meet sfty.

### Platform overview.

The platform that offers a comprehensive and intelligent safety management solution for multifamily properties.

sfty integrates smoke and water leak detection alongside motion, temperature and humidity monitoring. Built with flexibility and efficiency in mind, the system's timely notifications are designed to stop minor incidents from escalating into costly emergencies by alerting property managers and residents when a potential issue is detected.



**Timely notifications**



**Integrated, modular solution**



**Wireless system communication**



**Real-time 24/7 reporting**

# Smart monitoring for proactive property management.

By delivering real-time insights, weekly status reports, and helping reduce the need for frequent on-site inspections, sfty enhances both time management and cost efficiency, making it a valuable tool for proactive property management.



### Resident Support

sfty Control enables messaging to residents and issues a weekly report to property managers with a summary of events and device status.

### Instant Alert Features

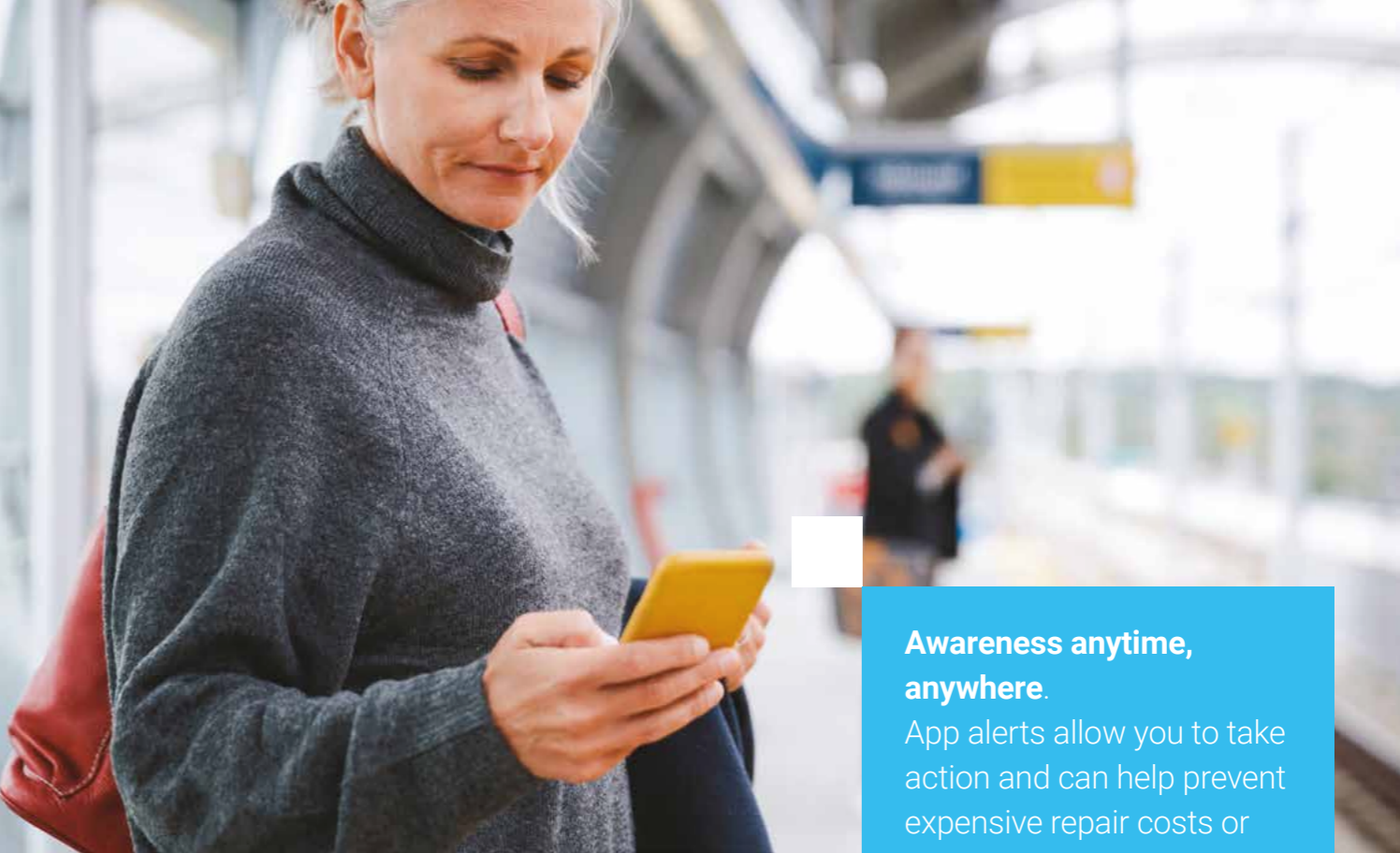
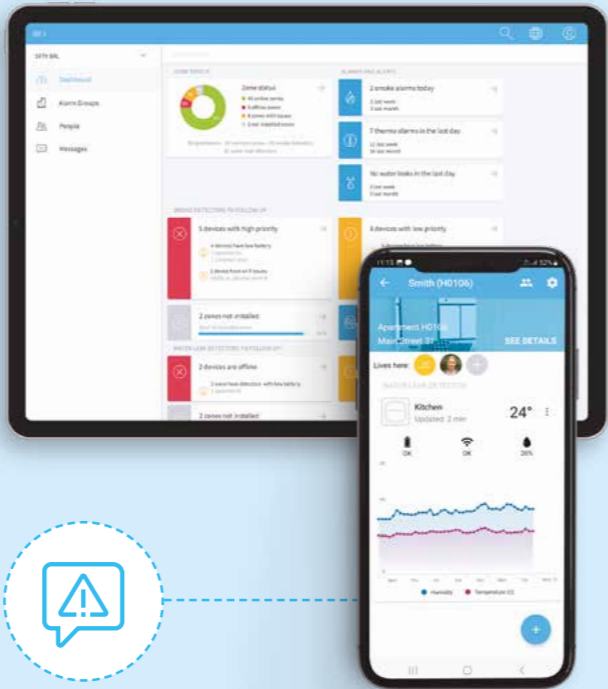
Direct sensor hardware malfunction notifications for the property manager's rapid response.

### Real-Time Updates

Streamlined communication for residents and property managers, reducing site inspections and saving time.

### Event Archive

Captures and documents all events to track patterns and optimise maintenance.



### Awareness anytime, anywhere.

App alerts allow you to take action and can help prevent expensive repair costs or false alarms.

## Stop minor issues becoming costly incidents.

sfty can provide smoke, ambient temperature and water device awareness, helping property managers prevent minor issues from escalating into major problems.





## Specialist installation. Minimal disruption.

Get up and running fast. With our dedicated installers and the device wireless features, we streamline the installation process and help avoid major alterations to your building.

Our multi-detector hardware is sleek, discrete and has an unobtrusive design allowing it to blend seamlessly into any environment.

The sfty system is a scalable solution that evolves with your building's changing needs for smoke and water leak detection. Whether your property expands or occupation levels change, the system adapts effortlessly, allowing for the easy addition of new sensors without the need for a complete overhaul. Thanks to its flexible IoT framework, the sfty system provides you with an adaptable and smart way of managing your building's connected smoke alarm and water leak detector coverage.



**Standout protection,  
that doesn't stand out.**  
sfty's hardware is designed  
to blend effortlessly into  
any environment.

\*It is the responsibility of the property owner to ensure that fire detection systems are regularly tested by competent persons and that the results of such tests are recorded in accordance with applicable regulations. Installation and use of the sfty platform may require, depending on capabilities used, the preparation and implementation of an appropriate Fire Detection and Fire Alarm System Design Plan by a competent person which the property owner must arrange independently.

# How it works:

## Hardware.

### sfty Sense

A smart optical smoke detector that, when used in combination with other sfty Sense devices throughout the building, can provide building-wide smoke detection. Interconnected across units, apartments and common areas it can communicate alarms throughout the building and can alert residents and managers via the sfty Sense in built siren, the app can alert residents and managers via SMS.

The sfty Sense detector is certified to BS EN 14604:2005/AC:2008 for smoke detection and also also reports environmental factors such as ambient temperature and humidity.



- ✓ **Smoke sensor**  
Can detect smoke smoke in the air and can trigger an alert to warn residents.
- ✓ **Climate sensor**  
Measures temperature and relative humidity.
- ✓ **Motion sensor**  
Can be activated for motion alerts and alarms.



### Water Leak Detector Resideo L1

The Resideo L1 Water Leak Detector can detect water leaks and potential freeze risks. It can be placed near water-prone areas like under sinks or near appliances.



### Water Shut-Off Valve Resideo L5

In addition to providing alerts, our water leak solution can be integrated with the L5 Water Shut-Off Valve so that the water supply can be stopped at the source to prevent further water damage quickly and effectively.

# How it works:

sfty software and app.

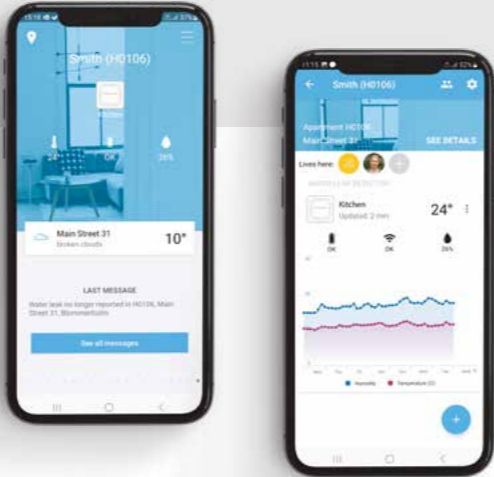


## Management Dashboard

The sfty Control online portal brings together a dashboard view of all your connected smoke detector smoke and water leak device monitoring into one user friendly dashboard. From smoke alarm to water leak systems, it can provide alerts to help residents and building management with a quick hazard response and simplifies management.

The system assesses alerts from connected smoke alarms and, via the certified alarm monitoring stations we have partnered with, it can notify emergency services of confirmed smoke alerts to help reduce false alarms. The dashboard also monitors sensor status and performance, and sends maintenance alerts like low battery notifications as needed.

- ✓ Continuous Monitoring
- ✓ Instant Messaging System
- ✓ Event Archive



## Resident App

The sfty resident app offers alerts when connected sensors detect smoke or water leaks. The app features also include personal safety tools like the “Help Me” personal alarm and “Follow Me” feature to share live location.

Residents can manage connected sfty device settings, report issues, and add trusted contacts —all accessible anytime, anywhere.

- ✓ Real-Time Alerts
- ✓ Location Sharing
- ✓ Add Trusted Contacts

# Technical specifications



| Specification                | sfty Sense                                                                                     | Resideo L1                                       | Resideo L5                                       |
|------------------------------|------------------------------------------------------------------------------------------------|--------------------------------------------------|--------------------------------------------------|
| Type                         | Optical smoke detector                                                                         | Water leak detector                              | Water shut-off valve                             |
| Display                      | LED indicator                                                                                  | LED indicator                                    | LED indicator                                    |
| Connectivity / Communication | Multi-tiered interconnection within and between homes through LiteWav3 (2.4 GHz ISM).          | WiFi (2.4 GHz)                                   | WiFi (2.4 GHz)                                   |
| Smart Home Integration       | N/A works with sfty Control                                                                    | Amazon Alexa, Google Assistant                   | Amazon Alexa, Google Assistant                   |
| Power Source                 | Dual power:<br>Battery-powered (4 AA Energizer Lithium)<br>OR<br>Hardwired (230V power supply) | Battery-powered (2 AA batteries)                 | 230V power supply                                |
| Sensor                       | Smoke: optical (0.1dB/m typical sensitivity)<br><br>Motion: pyroelectric infrared (45° angle)  | Detection on product and on cable sensor         | Detection through cable sensor or via L1         |
| Operating Relative Humidity  | 20-80% non-condensing                                                                          | 5-95% non-condensing                             | 5-95% non-condensing                             |
| Shut-off Valve Compatibility | N/A                                                                                            | Yes                                              | Yes                                              |
| Sensor Cable Length          | N/A                                                                                            | 5ft (expandable up to 500ft)                     | 5ft (expandable to 500ft)                        |
| Audible Alarm                | 85 dBA at 3m                                                                                   | 100 dBA                                          | N/A                                              |
| Alerts & Notifications       | Via app, SMS, email and push notifications                                                     | Via app, email, and push notifications           | Via app, email, and push notifications           |
| Dimensions                   | Height: 3.8 in<br>Width: 3.8 in<br>Depth: 1.0 in                                               | Height: 1.9 in<br>Width: 3.1 in<br>Depth: 1.1 in | Height: 3.7 in<br>Width: 2.5 in<br>Depth: 4.4 in |
| Warranty                     | 1 year                                                                                         | 2 years                                          | 5 years                                          |
| Awards, Certifications       | Certified according to:<br>EN 14604:2005<br>DoP: Sense-2015-001-EN<br>BS EN 14604:2005/AC:2008 |                                                  |                                                  |



For more information  
[sfty.com](https://sfty.com)

Sfty AS,  
Lilleakerveien 31,  
0283 Oslo,  
Norway.

Org/VAT no: NO 999 080 1  
SFTY-EMEA-MKG-BRO-0003-A3 | 04/25  
© 2025 sfty.